

CONTENTS

About Us	03
Our Service	05
Our Project	06
Our Capacity	07
Equipment and Machinery	08
Financials.	10
Managemnt & Team	11
Health & Safety	14
Quality Control	15
Business Strategy	16
Clients	17
Contact Us	18



16 **+**
YEARS
of experience,
technology and know-how

ABOUT US

We introduce with immense pleasure "BMS Infratech Pvt. Ltd.," a company specialized & dedicated to the Nation in the field of design, construction of major/minor bridges, Flyovers, R.O.B, underpass, highways, framed structures, water & Waste water treatment plants. The company and its associates are competent, creative, professionals who have long working experience and proven track record in planning, designing, handling & implementing projects in our above domain. The company has come into existence in the year 2006 to contribute its services to the Nation under the proprietorship of Smt. Saroj Chahar. Our endeavor is to provide, sustainable, world class technology and complete solution for projects in the above domain to entire satisfaction of our clients



OUR TOP PRIORITY IS ONLY QUALITY.



Vision & Mission

Our vision is to be the leading company in our domain to provide a complete solution and suggest our clients engaged in Nation building, most innovative, sustainable, economic technologies at the lowest price. Our mission is to contribute with our endeavors in Nation building till each of our country men has safe access to world class facilities, rich environment, safe highways. We believe in Quality & time bound construction of projects to the entire satisfaction of our clients & all the stake holders related to the concerned project

Culture statement

We are committed to Excellence in our endeavor. High quality technical and sustainable solutions with Client's satisfaction are our motive. We enthusiastically accept the challenges; fearlessly & can take risk. We are confident in our ability to deliver results. We are eager and ambitious. We find joy in our work, serving the Nation and our valuable clients

Commitment

The company employees & workers are like a family which is united by an unspoken pledge bounded by our convictions. We accept nothing less than loyalty in our ranks. We are true to each other and our cause is to work together and to follow commitments within stipulated time

▶ OUR SERVICES

We provide Design and construction services with materials in following domain along with technically vetted designs / proposals / reports etc. through Engineering Institutions like IIT's or any other reputed Engineering college:

Survey, investigation, Design, construction of major/minor bridges, flyovers, R.O.B, underpass, highways, framed structures, water & waste water treatment plants



OUR PROJECTS

S.No.	Name of the Client	Name of work	Name of the Client	Status	Project Cost
1	East West corridor (NHDP) Hojai, Assam	Construction of culvert/ Under Pass/RCC retaining wall	Punj Llyod	Completed	1.67
2	Kundli -Manesar –Palwal Project	Under Pass	D.S. Construction Ltd	Completed	0.78
3	NH-11 (Agra Jaipur Highway)	Retaining walls, Under pass	Madhucon Projects Ltd.	Completed	0.63
4	Yamuna Express way	Culverts, under pass, Minor bridges	JAYPEE Associates	Completed	2.47
5	Jaora –Nayagaon SH-31	Culverts, under pass, Minor bridges	PCL	Completed	1.43
6	Four laning of NH-91 Aligarh - Ghaziabad	Culverts, under pass, Minor bridges	PNC INFRATECH LTD	Completed	1.83
7	Lalitpur-Kailaguan Road	Paved Quality Concrete work	PNC INFRATECH LTD	Completed	6.65
8	Greenfield Express Way from Agra to Lucknow	Culverts, under pass, Minor bridges	PNC INFRATECH LTD	Completed	36.43
9	Dausa To Lasot From Km 23 To 37 Section	Minor Bridges, Major Bridges & ROB	PNC INFRATECH LTD	Completed	25.12
10	Dwarka To Porbandar	Minor Bridges	PNC INFRATECH LTD	Completed	13.47
11	Aligarh To Kanpur Package 3	Via Duct	PNC INFRATECH LTD	On going	14.68





Our Capacity

Consists of top of the range equipment and machinery including Earthmovers and Transport Equipment. Reinforced Concrete Equipment, and Lightweight Machinery



TOOLS & PLANTS

S.No.	Description	Make	Qty.
1	RMC Batching plants	Schwing Stetter & Konamt	4
2	Transit Mixture	Ashok Leyland/Sunbeam	7
3	Concrete pump (Stationary)	Putzmiser	2
4	JCB	JCB	2
5	Hydra	Escort	2
6	Aggregate loader	John deer	2
7	Weigh Bridge	Essae	1
8	Light Motor vehicles	Tata/ Mahendra	3
9	Tractor with trolley & Trailer	Eicher/ Mahendra/Joindeer	5
10	Motor cycles	Hero Honda	12
12	Water Tankers	Inhouse Fabricated	3
13	Steel cutting/ bending machines	Sparten	5
14	Bollero/ Scorpio	Mahindra	3
15	Generators(15, 45, 63 & 125 KVA)	Kirlosker	21



STAGING & SHUTTERING

Sr. No	Description	Unit	Qty
1	MS Shuttering Plates (1200x1200mm)	No	4500
2	MS plates (1000x1200mm)	No	2100
3	MS Shuttering Plates (600x1200mm)	No	2200
4	MS Shuttering Plates (300x1200 to 500x 1200mm)	No	1100
5	MS Channel (100x 50mm)	Rmt	5600
6	MS RS Joist (125x75 mm)	Rmt	3700
7	Cup lock different sizes(1to3)m	No	9200
8	ledger (1000mm)	No	32000
9	U-jack (450mm)	No	5500
10	Base jack (250mm)	No	2500
11	cribs(trestle),different dimensions (1to3m)	No	200
12	cantilever triangular bracket (1200mm)	No	2300
13	Crash barrier (1100m)	Rmt	250
14	Haunch plate of various size	Rmt	600
15	Ton buckles	No	1100
16	MS Chali 2400 mm long	No	650
17	G.I. sheet	No	3500
18	Porta cabin	No	4
19	MS pipe 48 OD (3 to 6.0 m long)	Rmt	1000
20	RCC Girder I Beam Shuttering 30 m long	Sets	2
21	Cement storage arrangement by MS trusses & profile sheets (Cement Godown)	No	3
22	Site accommodation for site offices & site staff	Sqm	800





Financials

Annual Turnover

S.No.	FINANCIAL YEAR	TURNOVER (IN CR.)
1	2017-18	10,17,74,080.00
2	2018-19	17,58,07,723.00
3	2019-20	16,20,14,639.00
4	2020-21	4,06,79,209.00
5	2021-22	1,22,03,846.00
6	2022-23	2,34,16,140.00
7	2023-24	4,70,25,499.00

Our Bankers

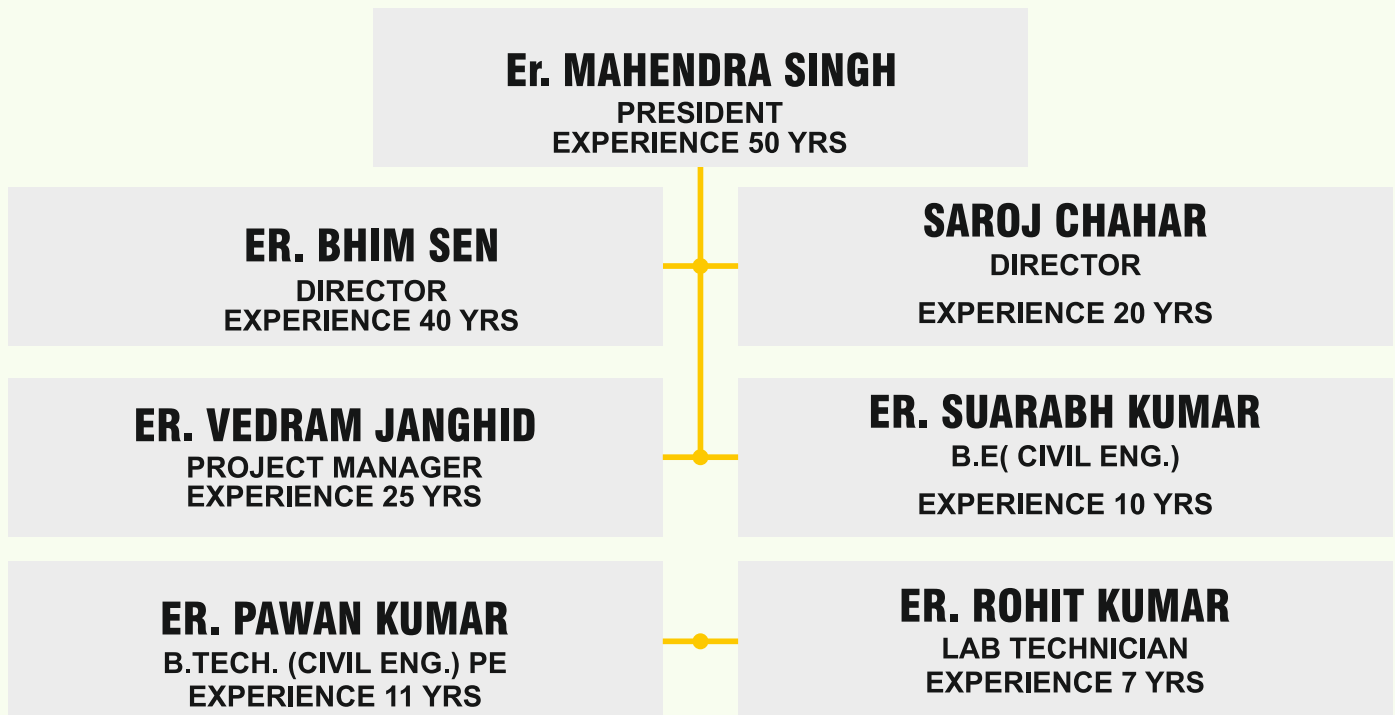


बैंक ऑफ़ बड़ौदा
Bank of Baroda





MANAGEMENT & TEAM



OUR ADDITIONAL STRENGTH

Mr. Jagdish (Store Officer)	
Mr. Ashish Patel (Surveyor)	
Mr. Sameer , foreman , mechanical	
Junior Engineer	14 NO.
Foreman	4 NO.
Batching plant operator	4 NO.
Drivers for TM/ Tractor/ LMV	22 NO.
Helpers, store/lab /pre stressing /survey etc	12 NO.
Watch & ward	20 NO.
Helper Mechanical	5 NO.
Concrete Pump Operator & Helper	2 NO.
Accountant & supporting staff	16 NO.

MANAGEMENT



**Managerial skills
at work.**

**Keeping morale
high.**



The same core of highly respected and experienced engineers, foremen and ground staff are all permanent employees which have been added to over the years. The breadth and depth of our knowledge base established over this period have been integrated into specifications for new projects as they evolved.

Throughout involvement in this industry we have been successful in retaining the services of highly respected consultants and subcontractors who have added to our success in delivering quality work. Our Company carries a very proud reputation for quality of work with a strong emphasis placed on our attitude and the manner of client relationship. Without this we would not have achieved the level of success we have enjoyed in moving to where we are as a major service provider to the construction industry.

Our repeat business in this sector is as a result of developing strong working relationships with our clients and their consultants. We combine value engineering and problem solution to give our Clients the best options in a manner that suits the industry requirements as a result of our experience.

We provide a flexible approach which we have found is a vital attribute in this industry.



MAHENDRA SINGH

President



BHIM SEN CHAHAR

Director



SAROJ CHAHAR

Director



PROJECT ORGANOGRAM





▶ HEALTH & SAFETY COMMITMENT

The company has a comprehensive Health and Safety policy to ensure the well being of all company employees and the public at large. We provide our clients with responsive, safe and reliable services while adhering to the ideas of sustainable environmental requirements. We give priority to Environment, Health, and Safety in all projects.

We believe that EHS contributes to our competitive strengths and benefits our clients, shareholders, and employees by contributing to the

over the well-being and economic health of the communities we serve. The management believes that effective management of Environmental, Health, and Safety Management issues is fundamental to success, and is therefore committed to continually improving the EHS performance through setting and monitoring of objectives and targets, necessary training, encouraging new ideas, employee participation, coordination with clients, suppliers, and annual management reviews.

QUALITY CONTROL

The company have a modern & well equipped testing laboratory for quality monitoring.

The company have coordination with major NABL certified laboratories also.



At its core, quality in construction means that a project is completed within the defined guidelines set out in the Scope of Work. This document serves as a set of guardrails for the project based on the owner's expectations, and sheds light on how to execute the project in a way that meets these standards.





BUSINESS STRATEGY

We have worked as professional development partners to the industry delivering projects to valued clients in a co-operative and collaborative manner. Our focus and concentration has always been on finding solutions and anticipating problems.

There are seldom projects in this industry that do not have either a delay imposed or a sudden acceleration required. All our staff, from management to field staff, are trained with this mind set. We are widely respected within the industry as being at the forefront in quality of work and timely delivery. Retaining the same staff helps us anticipate the needs of the industry on a contract by contract basis.



“

Objectives can be compared to a compass bearing by which a ship navigates. ...



OUR CLIENTS

We are eager to provide our services to all stake holders across the country engaged in Nation building in our domain. These include: National /State Govt./Semi-Govt. Departments and Departments like Development Authorities / Corporate Houses or any other organization engaged in Nation Building related to our Domain.





Office : 41, Kalinidi Puram, Mau Road, Khandari X-ing, Agra

Email: bmsinfratechpltd@gmail.com

Mob.: 8006991571, 9997909905, 7533910999